

Tropical Storm Ophelia

Friday, September 22, 2023, 7AM

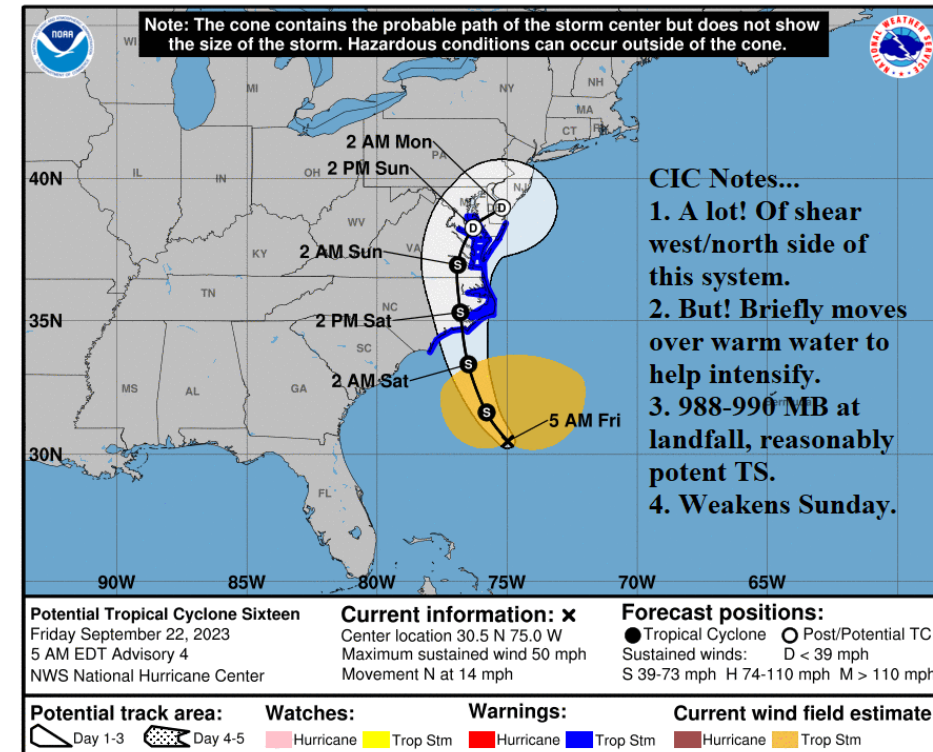
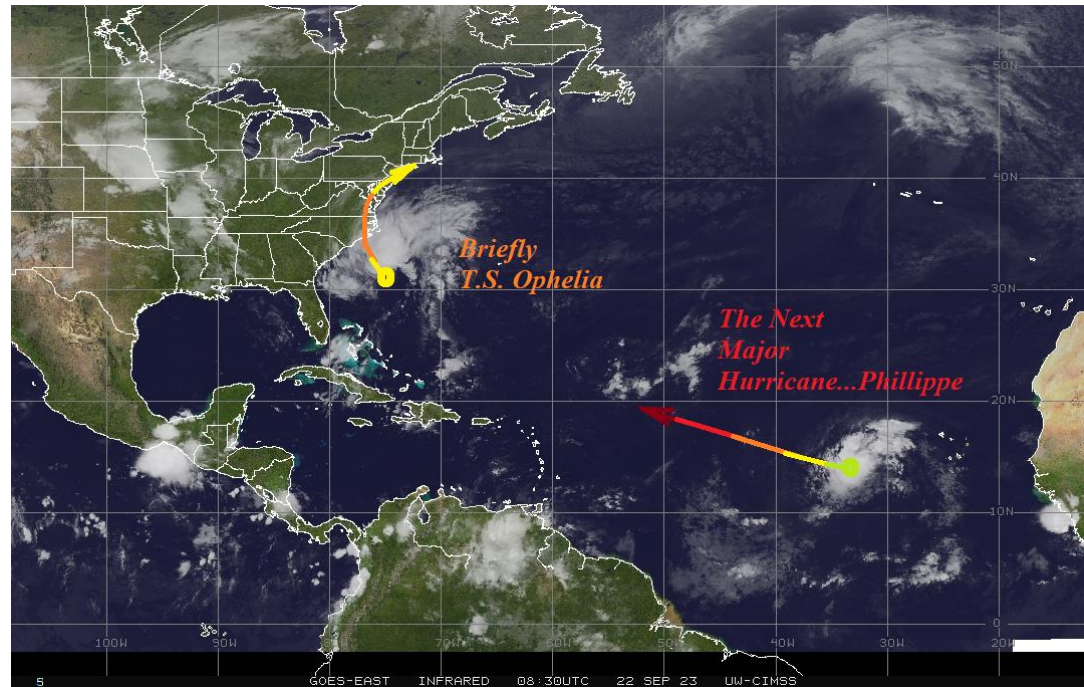
Named Tropical Storm Ophelia Later Today; Impacts BGE Service Area With Rain & Wind

- Moderate rain daybreak Saturday.
- Heaviest rain Saturday daytime/night.
- Showery Sunday.
- Total rainfall: 2-4 in.
- SAT wind: Higher, faster to arrive.
- ALERT 1 for wind initiates 3-6AM SAT; Rain 6-9AM SAT.
- ALERT 2 for rain late SAT; ALERT 3 SUN morning.
- Potential: Borderline ALERT 2 wind/ALERT 4 rain.

Ophelia Is A “Last Minute” Tropical Storm

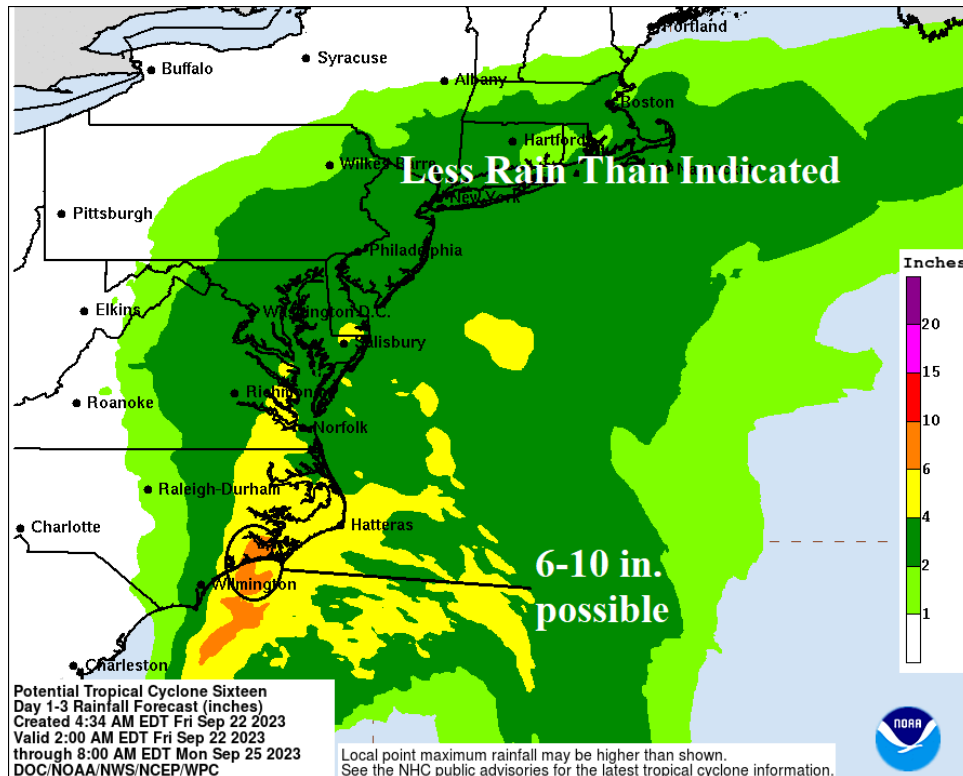
Shear axis west/north side of storm.
Organization late today over Gulf Stream.

NOAA/NHC forecast track...Weakens to a depression in Chesapeake Bay Sunday.

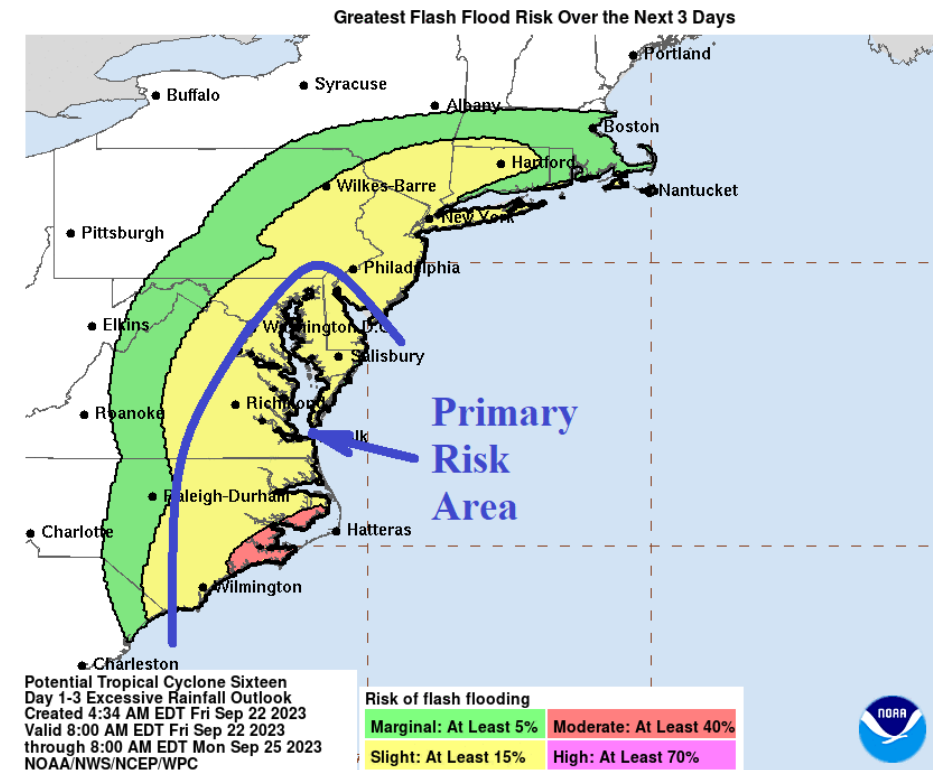


Large Area of Heavy Rain/Flash Flood Potential

Heaviest rain Eastern North Carolina; 2-4 in. possible BGE Area.

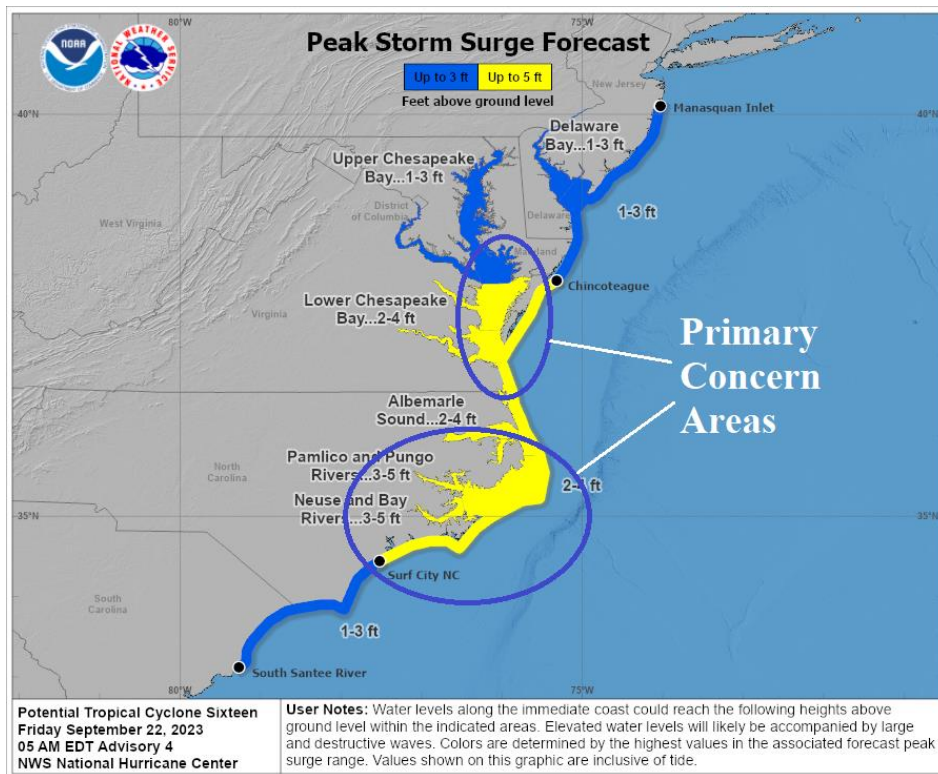


Flash Flood risk is mostly south and east of BGE (locally, soils are dry).

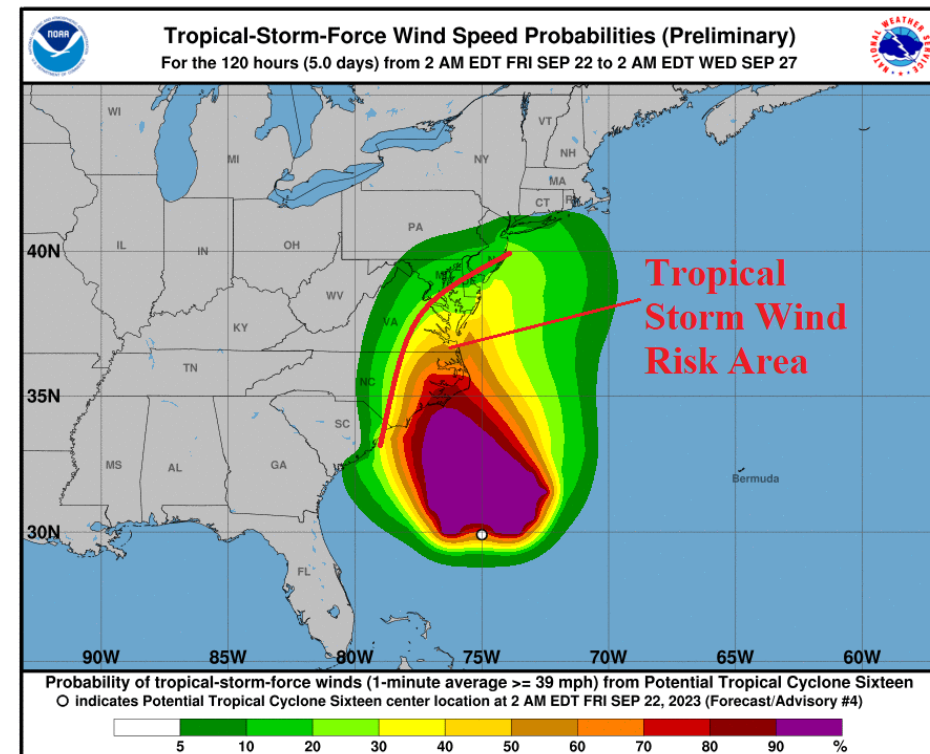


Storm Surge/Tropical Storm Wind

Significant storm surge NC Coast extends north into Chesapeake Bay.



Tropical storm force gusts extend well inland.



Saturday's Weather (More Wind & Rain)

Time	Weather	Wind	Wind Gust	BGE Alert
3AM	Light Rain	NE 13-18	G24-31	
6AM	Light-to-Moderate Rain	NE 18-24	G28-38	ALERT 1 Wind
9AM	Moderate Rain	NE 18-26	G32-40	ALERT 1 Wind Rain ALERT 1
Noon	Heavy Rain	NE 20-28	G32-42	ALERT 1 Wind Rain ALERT 1
3PM	Heavy Rain	NE 20-28	G35-45	ALERT 1 Wind Rain ALERT 1
6PM	Heavy Rain	NE-N 20-28	G35-45	ALERT 1 Wind Rain ALERT 1
9PM	Heavy Rain	N 18-26	G30-40	ALERT 1 Wind Rain ALERT 2
Midnight	Heavy Rain	N 15-25	G30-40	ALERT 1 Wind Rain ALERT 2

Sunday's Weather (More Rain & Less Wind)

Time	Weather	Wind	Wind Gust	BGE Alert
3AM	Moderate Rain	N 10-20	G 18-31	Rain ALERT 3
6AM	Showers	N 8-18	G16-23	Rain ALERT 3
9AM	Showers	N 10-15	G25	Rain ALERT 3
Noon	Showers	N 10-15	G25	Rain ALERT 3
3PM	Showers	N 10-15	G20-25	
6PM	Few Showers	N 8-15		
9PM	Mostly cloudy	N 8-15		
Midnight	Partly cloudy	N 8-15		