

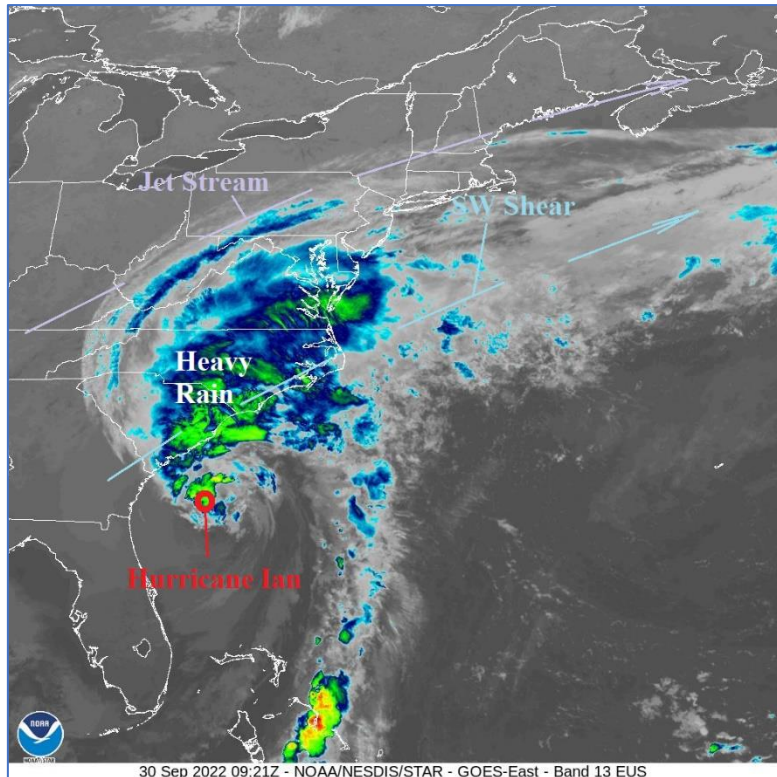
Hurricane Ian Heading to South Carolina for a 3rd Landfall

Friday, September 30, 2022

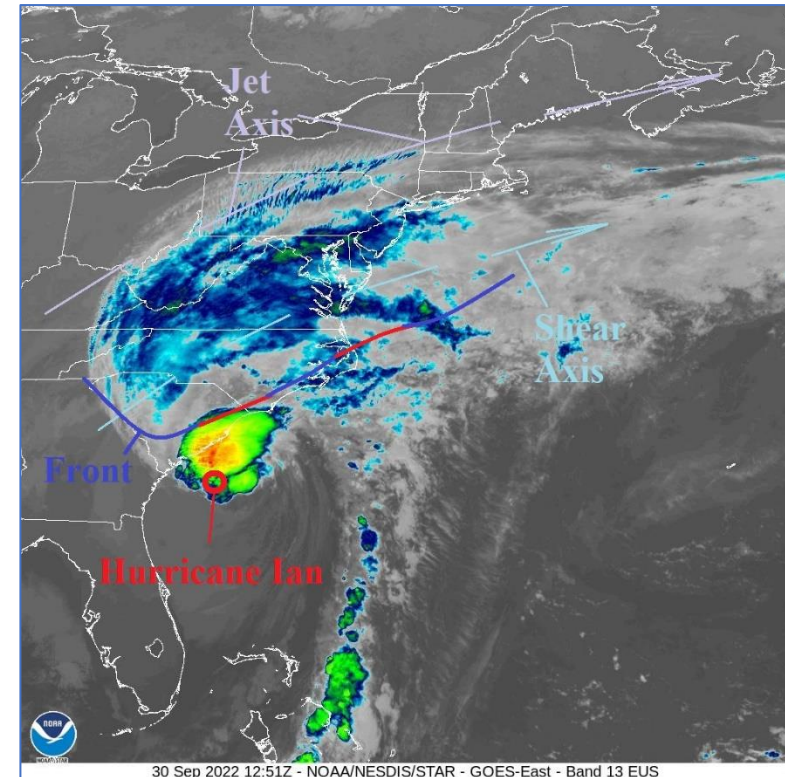
9:15AM EDT

Last Minute Tropical Transition?

Extra-tropical Ian Earlier Today...



Looking More Tropical Now...



Hurricane Ian 8AM EDT Report

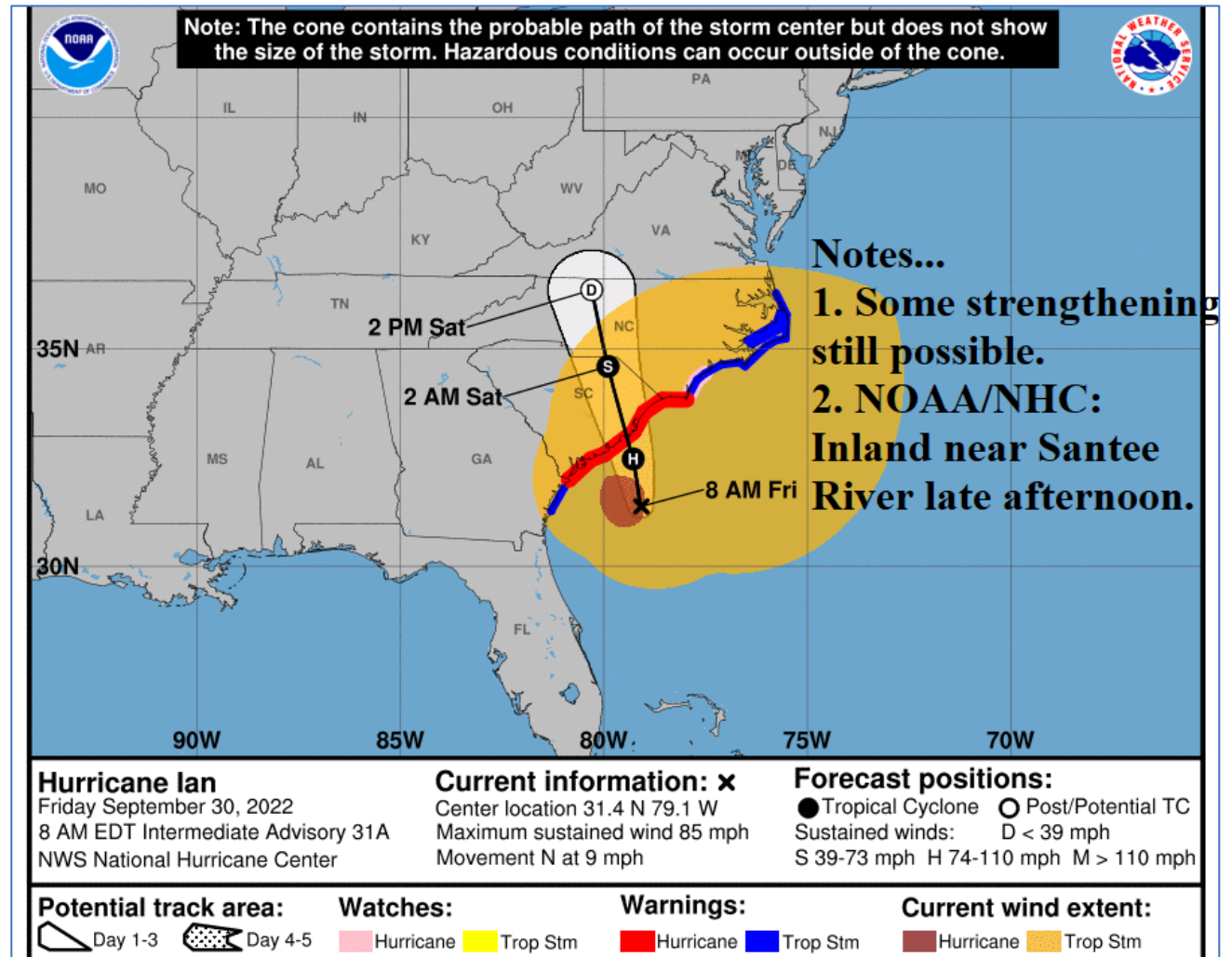
At 8AM EDT Category-1 Hurricane Ian is located at 31.4N/79.1W or about 105 miles south-southeast of Charleston, SC.

Top wind is 85 mph and central pressure is 984 MB.

Ian is moving north at 9 mph.

Ian moves N to NNW making landfall near Santee River late afternoon.

Weakens quickly to a tropical storm and a depression by tomorrow.



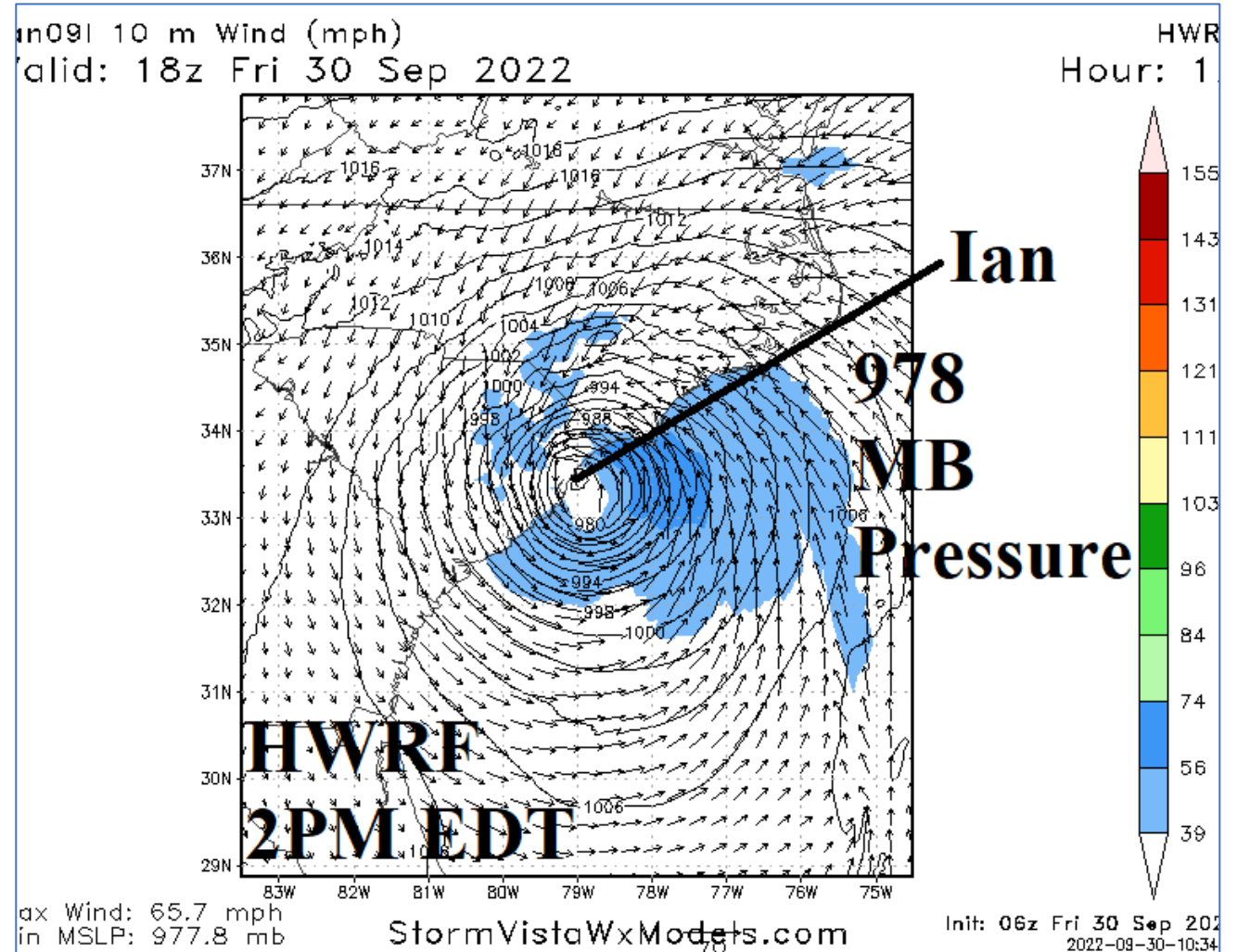
“Caveat” Forecast Using HWRF Model

HWRF (Hurricane Weather
Research Forecast) model shown.

Indicates 978 MB pressure at
landfall.

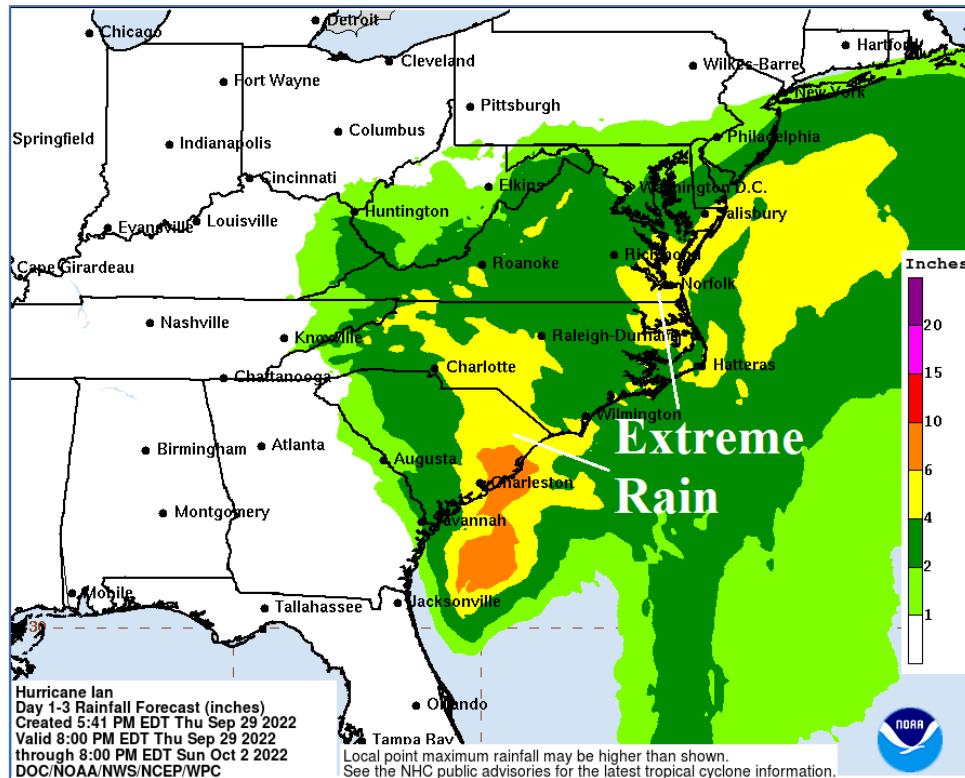
Time is 2-3PM EDT and location is
just east of Santee River.

Last second try at category-2
intensity.

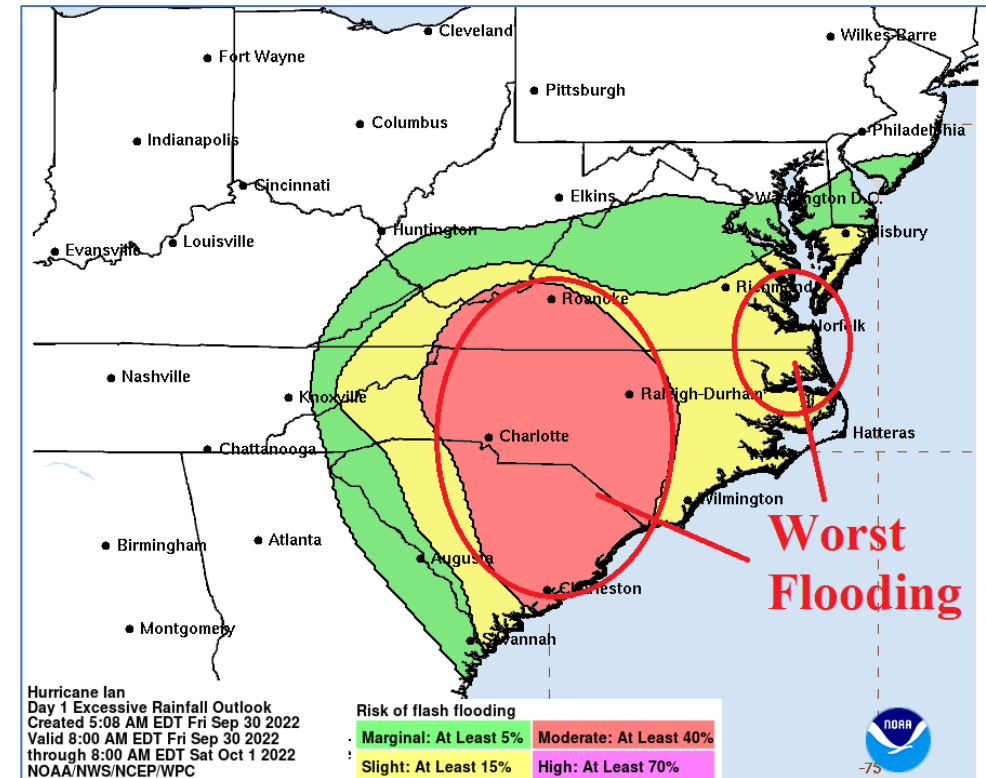


Latest Rainfall/Flooding Forecast

Longer duration of rain with increased latitude.

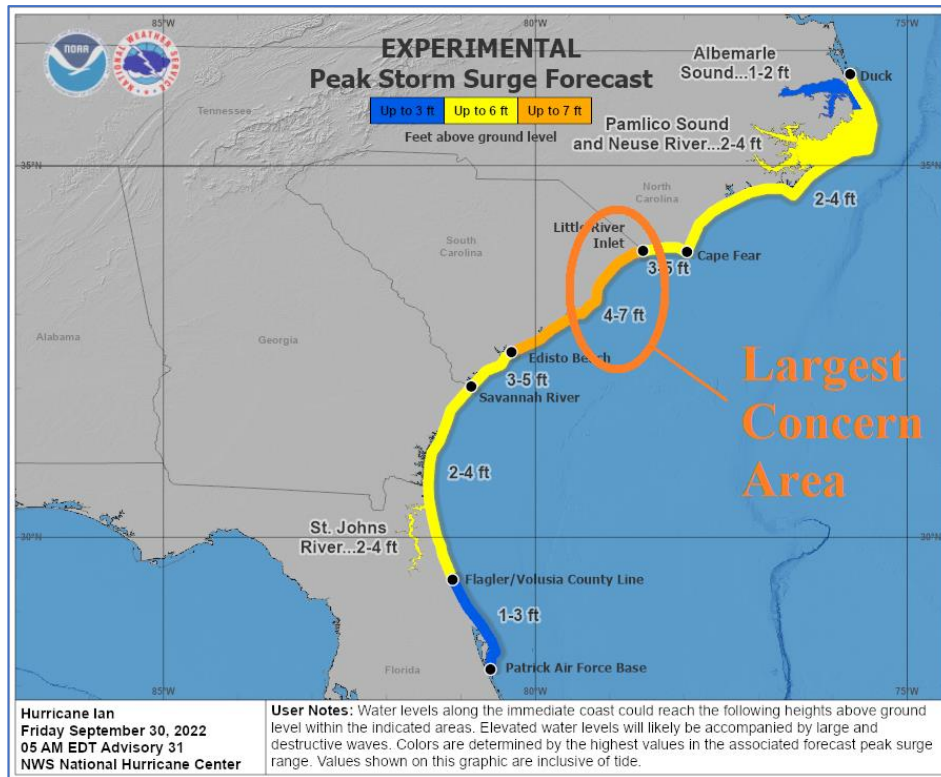


Expanding life threatening flash flood risk area.

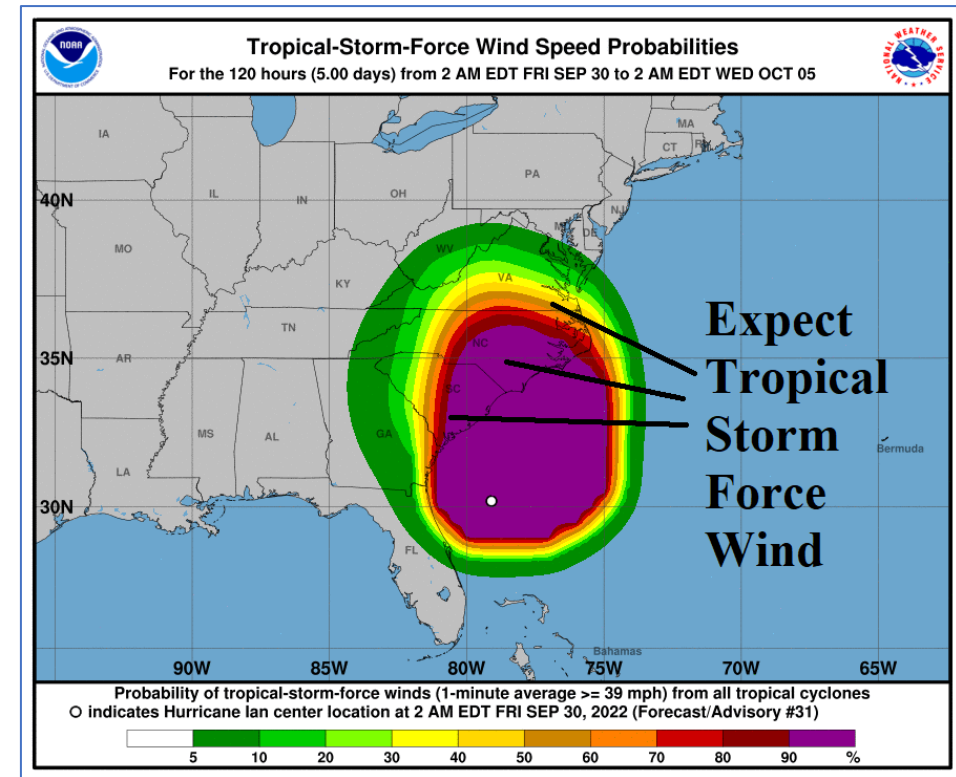


Latest Storm Surge/T.S. Wind Forecast Profile

Largest concern of a life-threatening storm surge is upper SC coast.



Wide area of tropical storm force wind.



Air Liquide Point Forecasts

Charleston, SC...Hurricane and Storm Surge Warning.

- FRI: Heavy rain through 4PM. N 30-35 G45-50
Now increasing to N 35-50 G55-70 1-3PM. Gust to hurricane force possible. After 4PM W 20-30 G35-50.
- FRI Night: Rapid improvement. W 10-25 G30-40 early evening, 10-20 overnight.
- SAT: Sunny. SW 10-20.
- Additional rain: 3.75-5.00 in. Max wind: 75 mph gust possible. Storm surge: 4-6 feet.

Darlington, SC...Tropical Storm Warning and Flood Watch.

- FRI: Rain becomes heavy midday. Beginning midday N 20-35 G40-55.
- FRI Night: Heavy rain ends 8PM. Rapid improvement follows. NW to W 20-35 G40-50 evening, W 12-25 G35 overnight.
- SAT: Mostly sunny. SW 12-25.
- Additional rainfall: 2.0-3.5 in. Max wind: 50-55 mph gust.